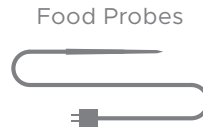
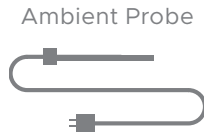
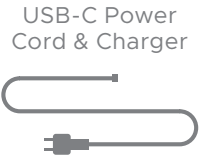


Welcome to FireBoard®

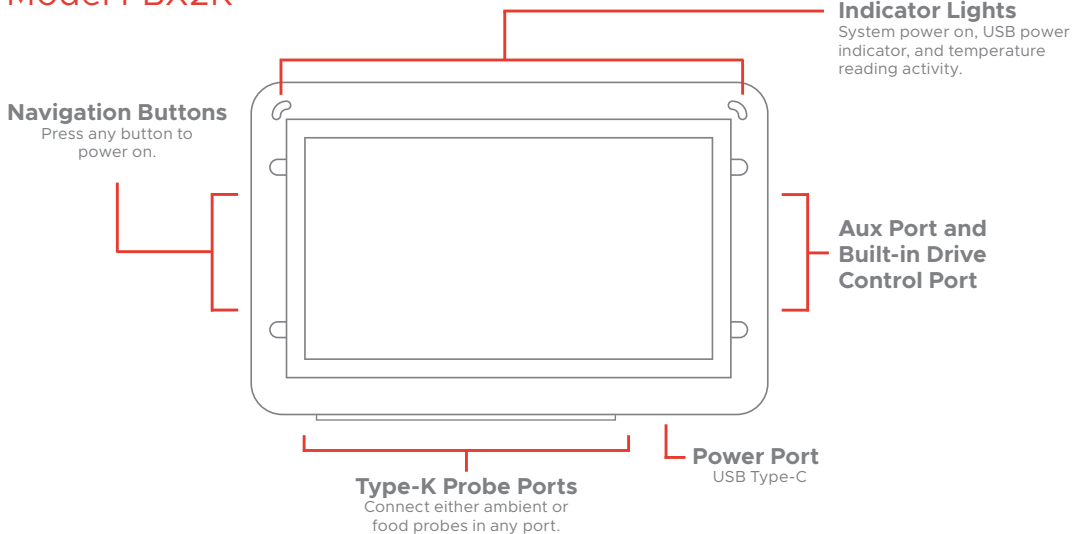
You Will Need:

WiFi, a smart phone or tablet, the free FireBoard App(Apple App Store or Google Play)

In the Box:



Model FBX2K



EN

DE

FR

IT

ES

FireBoard FBX2K Device Specifications

Dimensions	4.4"W x 2.8"H x 1.1"D (112mm x 72mm x 28mm)
Power Input	5VDC-12VDC, USB-C PD (Power Delivery)
Power Connector	USB Type-C
Measurement Accuracy	±0.7°F (±0.4°C), ±0.1% of reading
Measurement Range	-148 to 1472°F (-100 to 800°C)
Measurement Resolution	0.1°
Wireless	WiFi: 802.11 a/b/g/n & Bluetooth 4.0
Antenna	Internal
Encryption Protocols	WEP, WPA, WPA2
Weight	8oz (226.8g)
Battery Type / Runtime	Li-Ion 4000mAh / approx 30 hrs runtime
LCD Display	256 x 128 black and white, backlit
Probe Ports	Type-K Mini Thermocouple Jack (3x)
Aux Port	8pin Mini DIN
Drive Port	2.5mm Barrel
LED Status Lights	Multi-Color RGB LEDs
Operating Temperature	-13 to 140°F (-25 to 60°C)

Running on Battery and USB Power

The device is designed to run 24/7 with USB power, or battery power for approx 30 hours with a full charge.

A power and charging cord are included or any standard USB Type-C charging cable can be used. Charge time will vary based on battery conditions but can take up to **4-6 hours to completely charge.**

Cautions for Use:

Be careful not to get the FireBoard too close to extreme heat - it is rated up to 140°F (60°C). Avoid placing probes or probe wires over direct flame or extreme heat. The probes are rated for high temperatures, but grill temperatures can easily run away.

The FireBoard is considered weather-resistant, but not weatherproof or waterproof. The device will hold up in typical weather conditions, including rain, humidity and heat. However, it doesn't mean that the weather cannot impact or even damage this device.

Setting Up Your FireBoard - One Time Setup

EN

Turn your FireBoard on by pressing any button.

To turn your FireBoard off, hold any button for 2 seconds. This will bring up the main menu with options corresponding to the 3 buttons. Then press the top button(ⓘ) to select “Power Off”.

1 Download the FireBoard® App.



Our app can be found on the Apple App Store or Google Play under “FireBoard®”. You can then set up a free FireBoard Account via the app.

2 Add your FireBoard to your account.

After downloading the app, you should be able to add your FireBoard under Devices > Add FireBoard (the app will scan for devices automatically, via Bluetooth). The serial number shown in the app should match the serial number on the back of the FireBoard.

3 Configure your wireless network.

In the app, you should now see your FireBoard listed in your devices, and can proceed to edit its settings. Under Device > Manage Wireless, you can enter your wireless name & password. This can take up to a minute to complete.

4 Connect temperature probes.

Your FireBoard will sample the temperature every 5 seconds for each probe connected to the channel ports.

A Note about Bluetooth and Wireless Connectivity:

The FireBoard utilizes a Bluetooth 4.0 (BLE) connection (connected to a mobile device) and wireless (WiFi) to communicate with the FireBoard servers. Several key features pertaining to these connections are:

- Traditional Bluetooth “pairing” is not necessary with BLE connections.
- The BLE connection is used to discover FireBoard devices and initially to setup WiFi.
- The FireBoard will also utilize the BLE connection to transmit temperature data to a mobile device in the event the FireBoard is not connected to WiFi.

EN Using Your FireBoard®

Using your FireBoard thermometer is simple! Just **turn it on (press any button)**, and **connect your temperature probes**.

The FireBoard will automatically re-connect to any wireless networks which have been previously configured and are still available. Temperatures are also always available over Bluetooth, provided it is in range (approx 100').

A new session will automatically start once temperature data is being pushed. Sessions will automatically close after 30 minutes of inactivity. You can easily modify the session name and add notes via the Sessions view of the app.

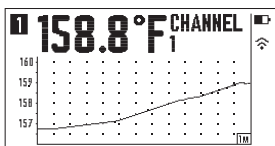
Monitor your temperatures on your mobile app or online at fireboard.io.

Multi-Graph Display Views and Navigation Buttons

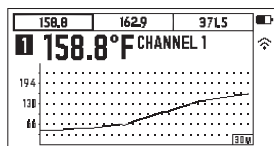
Your FireBoard 2 includes a large LCD capable of displaying multiple views including historical charts of temperature data. There are 4 primary viewing options that can be changed by pressing the top button (⏪). The middle button (⏩) will change the active channel being displayed. The bottom button (⏴) will show additional details or adjust the temperature chart range.



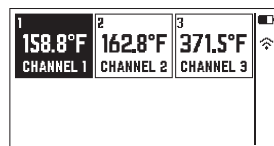
Single Channel Temp



Single Channel Temp with Graph



Multi-Channel Temp with Graph



Multi-Channel Temp

NOTE: The FireBoard will automatically rotate the screen based on the orientation of the device.

Holding down any button for 2 seconds will bring up the main menu. Select the menu item by pressing the corresponding button. The menu will close automatically after 5 seconds if nothing has been selected.

You can use voice recognition technology with your FireBoard!

Your FireBoard is compatible with Amazon Alexa and Google Assistant. Ask Alexa or Google for your temperatures or how long your session is.

For setup instructions and FireBoard voice recognition information, visit fireboard.com.

amazon alexa

works with the Google Assistant

Food Temperature Guide

	FireBoard recommendation	USDA Minimum
Brisket, Pork Shoulder, Ribs (Beef and Pork)	204°F (96°C)	145°F (63°C)
Beef, Lamb, Steaks, Chops	145°F (63°C) (medium)	145°F (63°C)
Poultry	160-165°F (71-74°C)	165°F (74°C)
Ground Meat	160°F (71°C)	160°F (71°C)

Using the FireBoard® App

The FireBoard App allows you to view your temperature readings your FireBoard is monitoring. There are multiple tabs in the FireBoard App:

Dashboard: the main view to monitor realtime temperatures and current Session graph

- The 'Detail' view shows Min / Max / Avg temperatures
- Alerts can be viewed and configured (touch the Channel to set up alarms)
- Channels can be named or hidden from view
- Add Session Notes, which allows to add detailed text notes and/or images
- Share Session feature creates a link which you can send via text or post to social media

Sessions: historical list and graphs of Sessions

- Session names, notes, and start / end times can be edited
- New Sessions can be manually triggered from this view

Programs: manages a temperature profile throughout a session when paired with Drive

- Create Drive Programs based on Time, Temperature or both
- Programs must be paired with the FireBoard Drive Control Cable(sold separately)

Settings: user account login and device settings

- Editing account name and email settings
- Configuring Alert notification recipients (SMS phone numbers and emails)

Setting up Alerts

Multiple alerts can be configured for each channel via the Dashboard view of the app. Just touch the channel you wish to configure. Multiple phone numbers & emails can be added for notifications. The alerts have the following parameters:

Max/Min Temp	Thresholds for alert condition (one or both can be set).	Minutes Buffer	Alerts will not fire unless conditions exist longer than this value. Default value is 0.
Email, Text, & In-App Notifications	Toggle your notification preference(s).	Minutes Repeat	Specify how often alerts will repeat once alert conditions are triggered.
Custom Start/End Times	Define when alerts are active (alerts will fire only inside of this time window). By default, this window is all day.	<i>Don't forget to add your email, text and in-app notifications preferences in your account settings.</i>	

Using the Online Dashboard at fireboard.io

Monitor your temperatures, set alerts, and view session history all online through any web browser. Just log into your account at fireboard.io.

Using the FireBoard Drive System

The FireBoard 2 Drive has the FireBoard Drive Control System built in. Fireboard Drive Control System is designed to control most 12V fans. Fans are most effective when a stable fire has been established and vents are adjusted accordingly. Every smoker is different: learning how to achieve a steady temperature by controlling your vents will make your fan more efficient.

1 Setup Your Fan

Your fan should be the primary source of air for your fire. A secure and air-tight installation is best. There are likely fans and adapters built for your smoker to get the ideal fit - most 12V fans with 2.5mm plugs work with FireBoard 2 Drive.

2 Connect the Fan

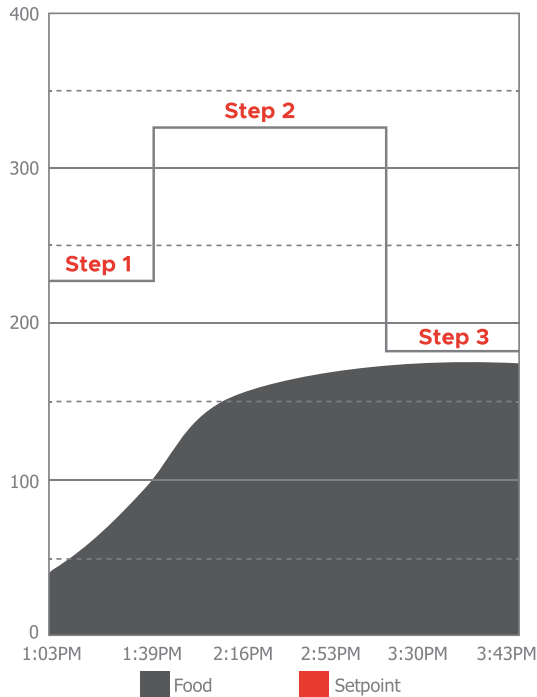
Your fan will plug into the 2.5mm barrel plug. The FireBoard's battery is fully capable of driving your fan - for longer cooks, we recommend plugging in your FireBoard unit.

3 Setup Your Cook in the FireBoard App

The Dashboard will now have the FireBoard Drive™ controls. Select a channel you want to monitor the pit temperature (“Control Channel”) - you can use any of the available channels. The app will display the current pit temperature once a probe is plugged in. Press the “Setpoint” button to enter the desired pit temperature. For best results, start with a fairly stable pit temperature and allow FireBoard Drive™ to slowly increase the fan speed or wait until the temperature falls below the setpoint.

For more control and customization, use the Programs tab. Programs give you the ability to create their own step-by-step programs that lets you change your setpoint over time. Learn more about Programs at our Knowledge Base at docs.fireboard.io.

Example of a Drive Program



The graph above shows a 3 Step Program.

Step 1 is to hold setpoint of 225°F for 20 minutes.

Step 2 is to hold a setpoint at 325° until target temp reaches 165°.

Step 3 is to hold setpoint at 180°, which is the default hold step that is added at the end of programs.

Helpful Tips and Suggestions

Here are some helpful tips and suggestions to help you get the best results from the FireBoard Drive Control System.

Make sure your fire has an abundant fuel supply.

Don't skimp on the wood or charcoal. You'll get more consistent results if your fan has more fuel to work with.

Learn how your vents work.

For most smokers, closing off all lower vents and opening the exhaust vent slightly provides the most controllable environment for your fan. Your mileage may vary, but closing down your intake and slightly opening the exhaust is a great place to start!

Take control of your fire.

Establishing a fire with a slightly falling temperature profile will let FireBoard Drive jump into action once the temperature approaches your setpoint. The fan's speed will adapt to keep your temperatures in the zone.

Mastering Drive Programs

FireBoard Drive™ Programs are saved in your app in the Programs tab, allowing you to fine tune your program until you are satisfied with your cook. Once mastered, you will be able to run your programs and let your FireBoard handle all of your temperature control needs.

Advanced Fan Settings

The FireBoard App has advanced settings for your Fan Control Cable, including: LID Detection on/off, PID Control Modes, Fan Size Settings, and Max Fan Speed %. For complete information on advanced settings, please refer to our Knowledge Base at docs.fireboard.io.

Additional Support and Technical Information

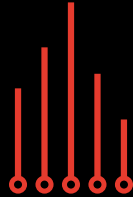
Please visit our support page at www.fireboard.com/support or check out our Knowledge Base at docs.fireboard.io for more information.

Customer Service can be reached at (816) 945-2232 or questions can be emailed to support@fireboard.com

The FireBoard 2 utilizes "10K Thermistors", "100K Thermistors", "RTD PT-100" and "Type-K Thermocouple" type temperature probes. Specific ratings and specifications for FireBoard Temperature Probes can be found online at: fireboard.com/probes

Your FireBoard thermometer has been designed, engineered, and calibrated to provide precise and accurate temperature readings. Should you encounter any technical problems with your device, please contact us at support@fireboard.com and we will work with you to find a solution.

FireBoard Labs provides a 1-year limited warranty on the FireBoard thermometer, and a 6-month limited warranty on all temperature probes. More information on this warranty can be found online at fireboard.com/warranty or in the legal disclaimer brochure included with this product.



FireBoard[®]

FireBoard Labs
Kansas City, MO
info@fireboard.com
816-945-2232

www.fireboard.com

FireBoard is a trademark of FireBoard Labs, LLC and is registered in the U.S. Apple, the Apple logo, iPad, iPhone and iPod touch are trademarks of Apple Inc., registered in the U.S. and other countries. App Store is a service mark of Apple Inc. The Bluetooth word mark and logos are registered trademarks owned by Bluetooth SIG Inc.

FireBoard[®] TM and © 2020 FireBoard Labs, LLC.
All rights reserved.